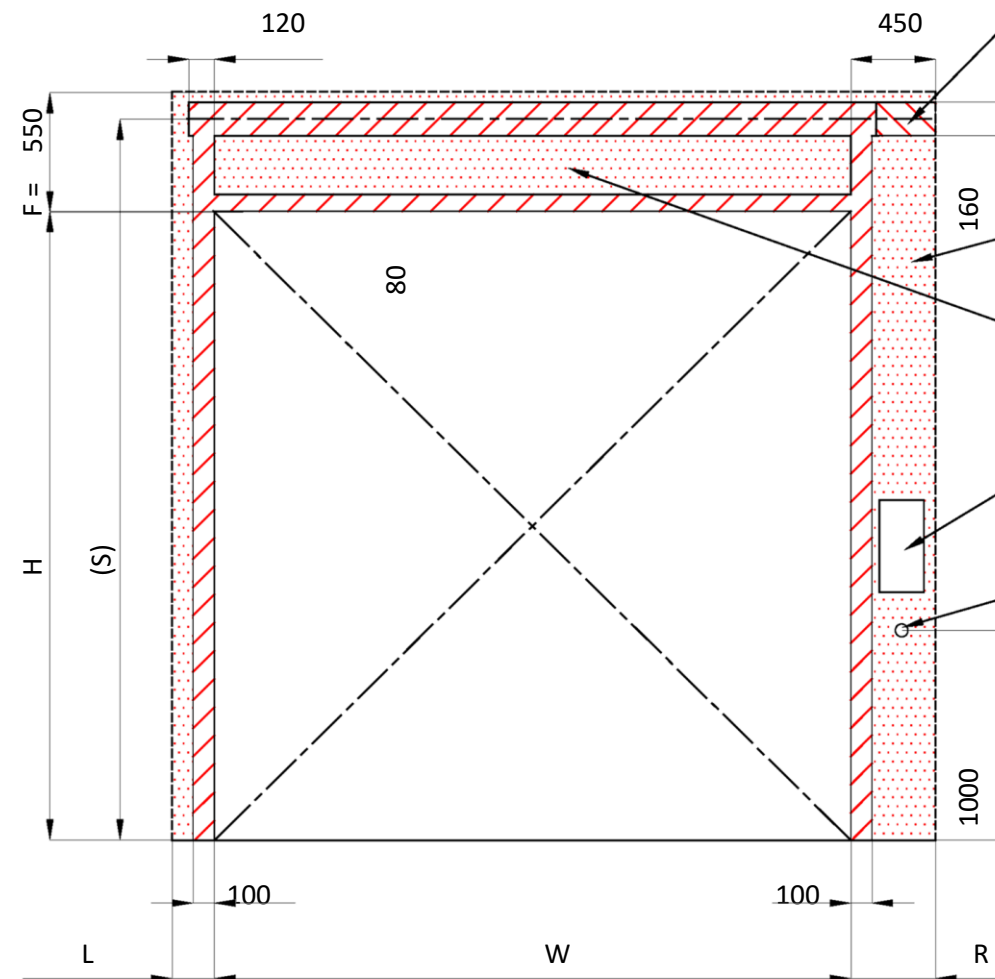
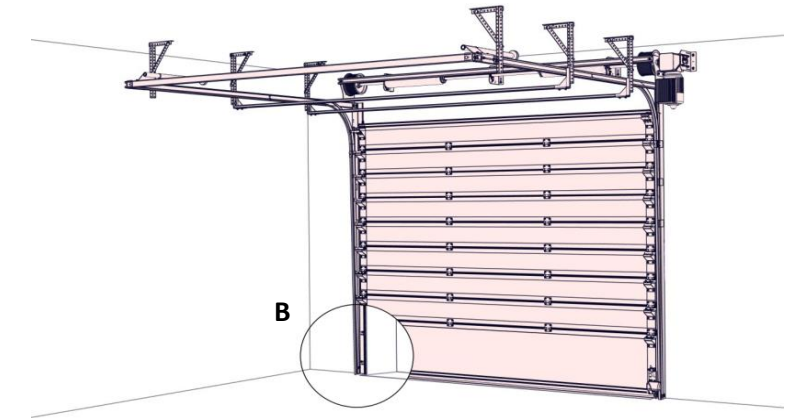
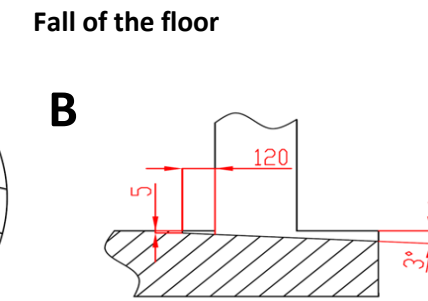
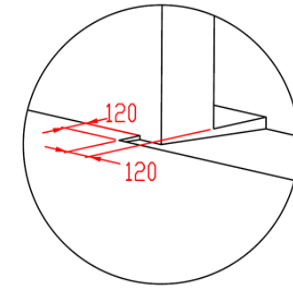
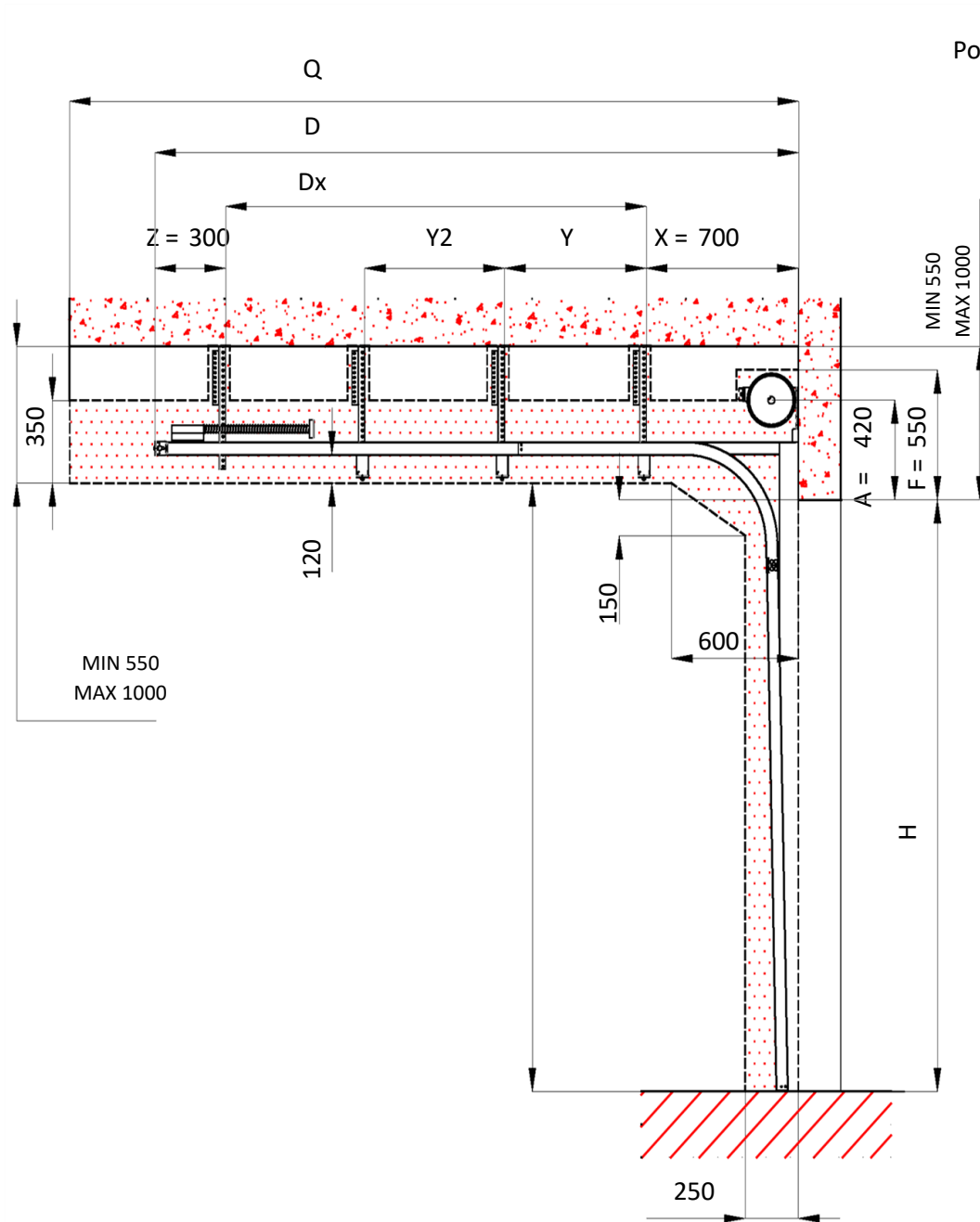


# Standard lift system (SL)

Max. W x H 5000x5000

EN

Opening width  mm  
 Opening height  mm  
 Position of motor



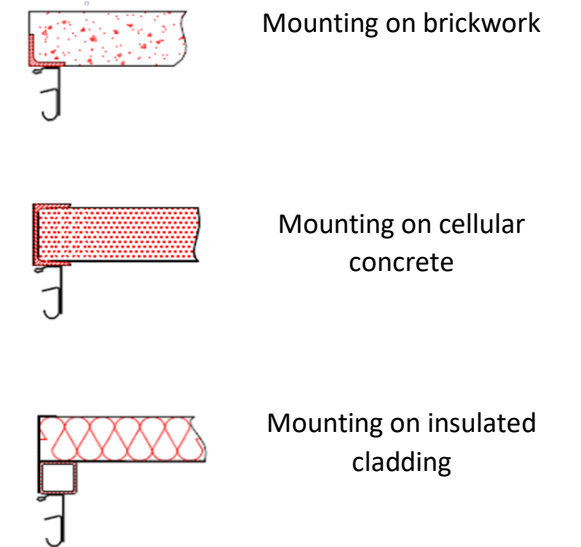
Mounting surface for motor (L or R)

Necessary side room for electrical- operation (L or R)

Necessary free room

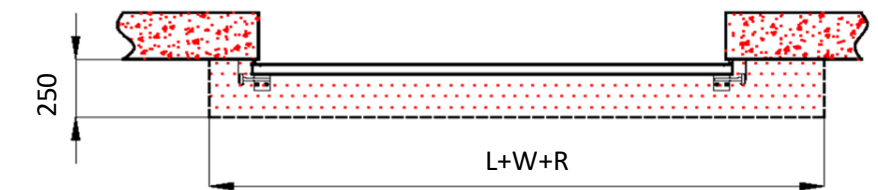
Mounting surface for control panel dimensions 210 x 550 mm  
 Bottom edge 1500mm from floor

Industrial electric outlet cee 20A, 5P, 400 V, protected by 20A circuit breaker, residual current device I=30 mA.

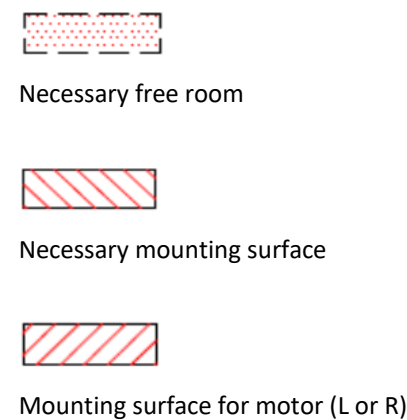


**Note:**  
 Mounting surface must be flat and massive and all mounting surfaces must be in one level.  
 Furthermore the opening must be plumb and square.

## Interior view



Units in mm		
W	Opening width	
H	Opening height	
F	Free room above lintel	550
A	Height of shaft above lintel	420
L	Free side room left	0
R	Free side room right	0
D	Back room length of horizontal track	H+530
X	1st hanging point	700
Y	2nd hanging point	1/2 Dx
Y2	3rd hanging point	2/3 Dx
Z	4th hanging point	300
Q	Free space depth (back room)	D+400
S	Shaft Axis over Floor	(H+A)
L/R	Position of motor	min. 400



**Work to be carried out by customer, unless in advance otherwise is agreed in writing.**

Supply and fix mounting frame and mounting surfaces for the rails and the spring packet in case of aerated concrete or sandwichpanels etc.

Necessary mounting surface and free room as shown.

Electrical supply required to be :  
 Industrial electric outlet cee 20A, 5P, 400 V, protected by 20A circuit breaker, residual current device I=30 mA.

Revision date 04.01.2023 Sheet: A3  
 Version: 2309